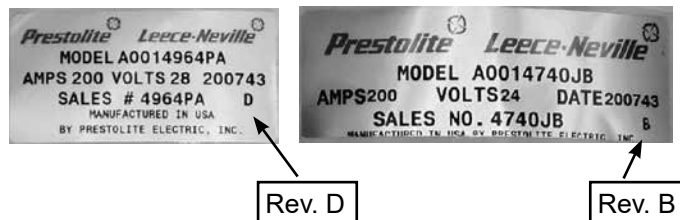


Group:	4000 T-Mount	Notes:
Form:	SP1010	Refer to SP1010 -DWG for major component drawing. Refer to TSB-3007, 3012, and TSB-3014 for hardware kit breakdown. Refer to TSB-1118 for solid leadframe changeout procedure.
Date:	July 7, 2017	
File:	Alternator Parts List Section	


**\* This indicates the revision letter on the label. If your unit is this revision or later, use this service component.**




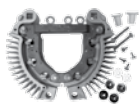




In addition to identifying the part number from the part label it is also required that you identify the REV level. It is probable that no REV level is present; if so, utilize the part number only to identify the appropriate part. However, if a REV level is present, choose the applicable part for that REV level which is listed below the part number.

**Important:** The information contained in this bulletin is intended for use by trained, professional technicians who have the proper tools, equipment, and training to perform the required maintenance described above. This information is NOT intended for 'do-it-yourselfers', and you should not assume that this information applies to your equipment. If you have any questions regarding this information please visit our website at [www.prestolite.com](http://www.prestolite.com), or contact our technical service department at:

Group:	4000 T-Mount	Notes: Refer to SP1010 -DWG for major component drawing. Refer to TSB-3007, 3012, and TSB-3014 for hardware kit breakdown. Refer to TSB-1118 for solid leadframe changeout procedure.
Form:	SP1010	
Date:	July 7, 2017	
File:	Alternator Parts List Section	

Component View	Front Housing Spacer, bearing, retainer	Rotor	Rear Housing, bearing	Stator	Rectifier Negative	Brush Box
						 Or 
Model	1	2	3	4	5	6*
A0014900JB	A014101351S	A020101348S	A011105239S	A022101325S	A051104337S	A009097082S
A0014905AA	A014101685S	A020101348S	A011105239S	A022096905S	N/A	A009097082S
A0014910JB	A014101351S	A020101703S	A011105239S	A022100827S	N/A	A009097082S
A0014950AA	A014101351S	A020101348S	A011104772S	A022101325S	A967079978S	A009097082S
A0014954AA	A014101351S	A020101703S	A011104772S	A022101341S	A967079978S	A009097082S
A0014970JB	A014101351S	A020102215S	A011105239S	A022101888S	A051104337S	A009097082S

Component View	Fan	Regulator or Cover	Rectifiers Positive	Rectifier Assembly Pos/Neg	Overhaul Kit Bearings, slip ring, O-ring, brush holder	Hardware Kit
						
Model	7	8	9	9		
A0014900JB	A041075594S	R240103725S	A051104336S	N/A	K183104738S	K212104769S
A0014905AA	A041075594S	A038100265S	N/A	A051105220S	K183104738S	K212104767S **
A0014910JB	A041075594S	R240103725S	N/A	A051105220S	K183104738S	K212104767S **
A0014950AA	A041075594S	A038100265S	A967079977S	N/A	K183104738S	K212104771S ***
A0014954AA	A041075594S	A038100265S	A967079977S	N/A	K183104738S	K212104771S ***
A0014970JB	A041075594S	R240103725S	A051104336S	N/A	K183104738S	K212104769S








\* See SP1010-DWG for details on items.

\*\* See TSB-3012

\*\*\* See TSB-3014

Important: The information contained in this bulletin is intended for use by trained, professional technicians who have the proper tools, equipment, and training to perform the required maintenance described above. This information is NOT intended for 'do-it-yourselfers', and you should not assume that this information applies to your equipment. If you have any questions regarding this information please visit our website at [www.prestolite.com](http://www.prestolite.com), or contact our technical service department at:

Group:	4000 T-Mount	Notes:
Form:	SP1010	Refer to SP1010 -DWG for major component drawing. Refer to TSB-3007, 3012, and TSB-3014 for hardware kit breakdown. Refer to TSB-1118 for solid leadframe changeout procedure.
Date:	July 7, 2017	
File:	Alternator Parts List Section	

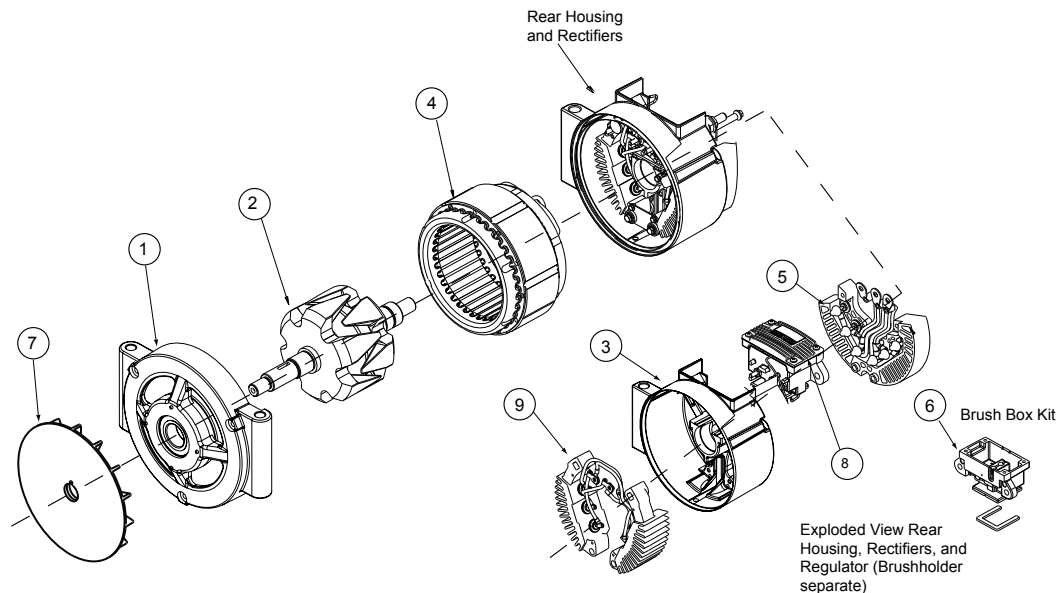
Component View	AC Studs	Positive Stud	Negative Cover Plate	AC Strap	Terminal Mounting Pad	Capacitor Assembly
						 Or 
Model	12	13	14	16	17	18
A0014900JB	A116101443S	Z115102683S	A038101396S	N/A	N/A	A031104788S
A0014905AA	N/A	N/A	N/A	N/A	N/A	A031096545S
REV: D						A031105229S
A0014910JB	N/A	N/A	N/A	N/A	N/A	A031096545S
REV: E						A031105229S
A0014950AA	N/A	N/A	N/A	K185104777S	A263101333S	N/A
A0014954AA	N/A	N/A	N/A	K185104777S	A263101333S	N/A
A0014970JB	A116101443S	Z115102683S	A038101396S	N/A	N/A	A031104788S

Component View	Brush Kit
	
Model	
All Models	K185104697S

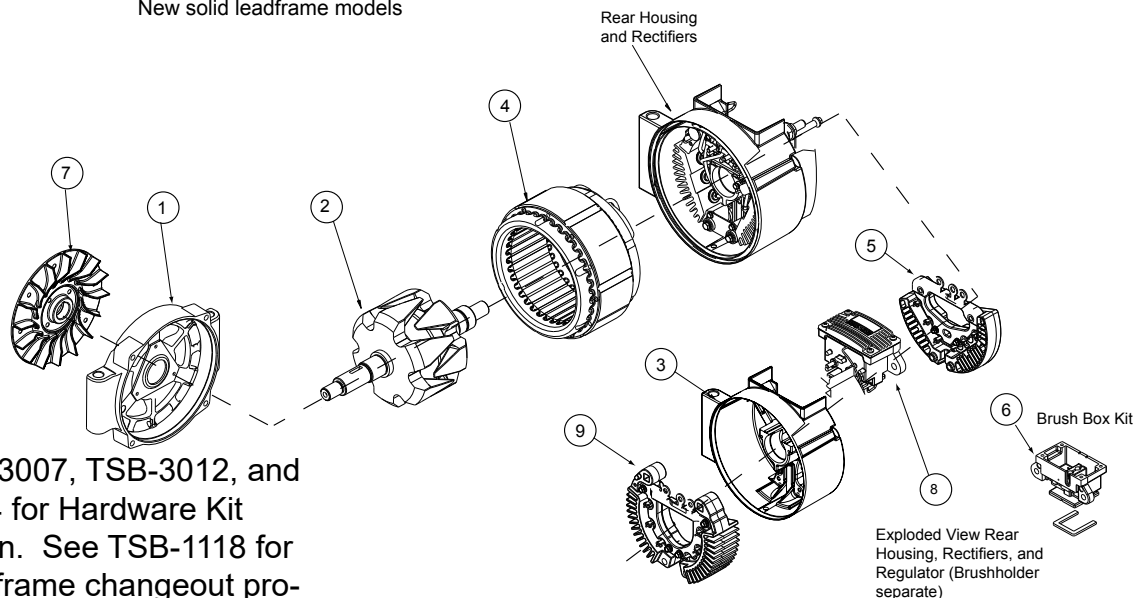
**Important:** The information contained in this bulletin is intended for use by trained, professional technicians who have the proper tools, equipment, and training to perform the required maintenance described above. This information is NOT intended for 'do-it-yourselfers', and you should not assume that this information applies to your equipment. If you have any questions regarding this information please visit our website at [www.prestolite.com](http://www.prestolite.com), or contact our technical service department at:

Group:	4000 Tmount	Notes:
Form:	SP1010-DWG	Refer to SP1010-4000Tmount for parts breakdown.
Date:	July 7, 2017	Refer to TSB-3007, TSB-3012, and TSB-3014 for hardware kit breakdown. Refer to TSB-1118 for solid leadframe changout procedure.
File:	Alternator Parts List Section	

4000 Series T-Mount



4000 Series T- Mount  
New solid leadframe models



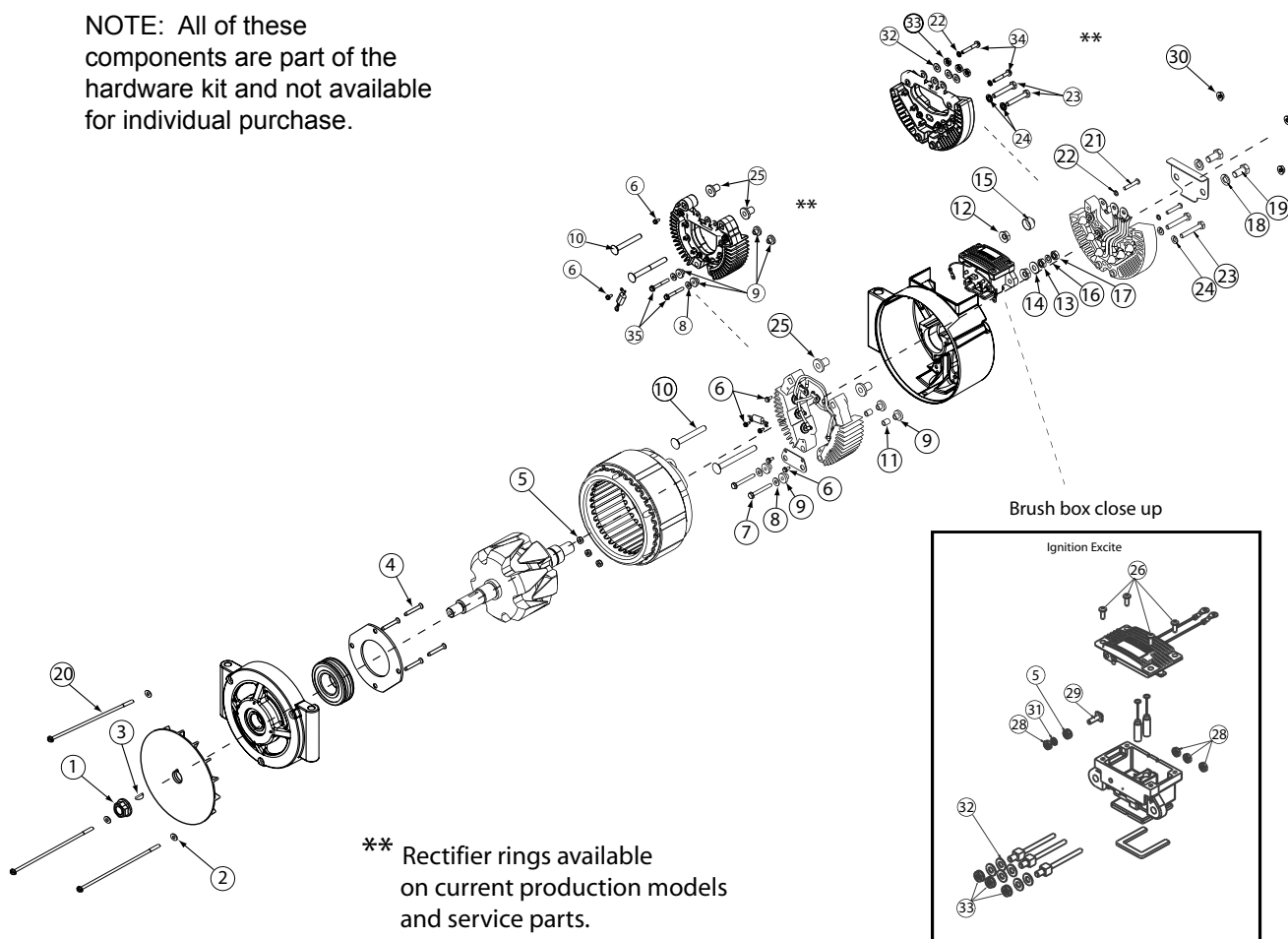
See TSB-3007, TSB-3012, and TSB-3014 for Hardware Kit breakdown. See TSB-1118 for solid leadframe changout procedure.

**Important:** The information contained in this bulletin is intended for use by trained, professional technicians who have the proper tools, equipment, and training to perform the required maintenance described above. This information is NOT intended for 'do-it-yourselfers', and you should not assume that this information applies to your equipment. If you have any questions regarding this information please visit our website at [www.prestolite.com](http://www.prestolite.com), or contact our technical service department at:

Source: Leece-Neville Heavy Duty Systems Division - Arcade, NY USA  
Date: July 7, 2017  
Bulletin No: TSB-3007  
Models: 4000 Series T-mount  
Subject: Hardware Kit for 4000 series T-mount alternators K212104769S for units with regulator.

## K212104769S

NOTE: All of these components are part of the hardware kit and not available for individual purchase.



Important: The information contained in this bulletin is intended for use by trained, professional technicians who have the proper tools, equipment, and training to perform the required maintenance described above. This information is NOT intended for 'do-it-yourselfers', and you should not assume that this information applies to your equipment. If you have any questions regarding this information please visit our website at [www.prestolite.com](http://www.prestolite.com), or contact our technical service department at:

Date: July 7, 2017

Bulletin No: TSB-3007

## 4000 Series T-Mount series Hardware (with regulator and rectifier) - K212104769S

Description	Qty.	Key	Where used
NUT, 5/8-18, LOCK	1	1	Pulley Nut
WASHER, FLAT#10	3	2	Thru-Bolt flat washer
KEY, WOODRUFF #8	1	3	Shaft key
SCREW, THREAD FORMING	4	4	Front housing retainer plate holding screw
NUT	4	5	Internal stator nuts to AC-taps
SCR TPG 6-32x11/32phw	5	6	Internal Positive Rectifier connector plate screw
#10 HEX/WSHR. Hd. Scr.	2	7	Hex screw for internal Rect. Jumper plate
WASHER FLT.203-.500-.0	2	8	Flat washer on internal rectifier connector plate screws
BUSHING , INS.	4	9	Insulates rectifier ring from rear housing
BOLT 5/16 x 2-1/2"	1	10	Positive post bolt, short side with clear cap, no connect
BUSHING, INSULATION	2	11	Cardboard insulator for internal bolt insulation
NUT, TENZ -5/16-18	2	12	Con. Nut for positive post
NUT,HEX 5/16-18	1	13	External positive post nut, lower
WASHER 5/16"	1	14	External positive post flat washer
STUD COVER	1	15	Used to cover positive post bolt externally that is not used.
WASHER LCK	1	16	External positive post lockwasher
NUT	1	17	External positive post nut, top
LOCKWASHER 3/8"	2	18	Lockwasher used on negative bolts externally
BOLT- 3/8" x 3/4"	2	19	External negative Bolts, holds negative plate
THRU.BOLT #10-32	3	20	Thru-Bolts holds Alternator together
SCREW	2	21	External negative rectifier flat head screws
LOCKWASHER #10	2	22	Used on screws in negative external rectifier
SCREW	2	23	External negative rectifier hold down bolts
LOCKWASHER 1/4"	2	24	Lockwasher on external negative rectifier bolts/ Hold down bolts
BUSHING , INS.	2	25	White internal post insulator
SCREW	4	26	Regulator screws for internal dome top regulator
SCREW	4	26	Regulator screws for internal flat top regulator
NUT,STEEL #10-32	4	28	Holds AC taps in brush box and ign terminal
SCREW	1	29	Square headed screw used on brush box
NUT, #10-32 FLANGE LOCK	3	30	Thru-Bolt Nut
LOCKWASHER #10	1	31	Used on brush box, IGN term.
WSHR FLT .266-.562-	6	32	Flat washer for brush box AC-Taps
NUT	3	33	Ac Tap Con Nuts
SCREW #10 X 1 1/4"	2	34	Holds negative rectifier to rear housing
SCREW #10 X 1 1/2"	2	35	Holds positive rectifier to rear housing

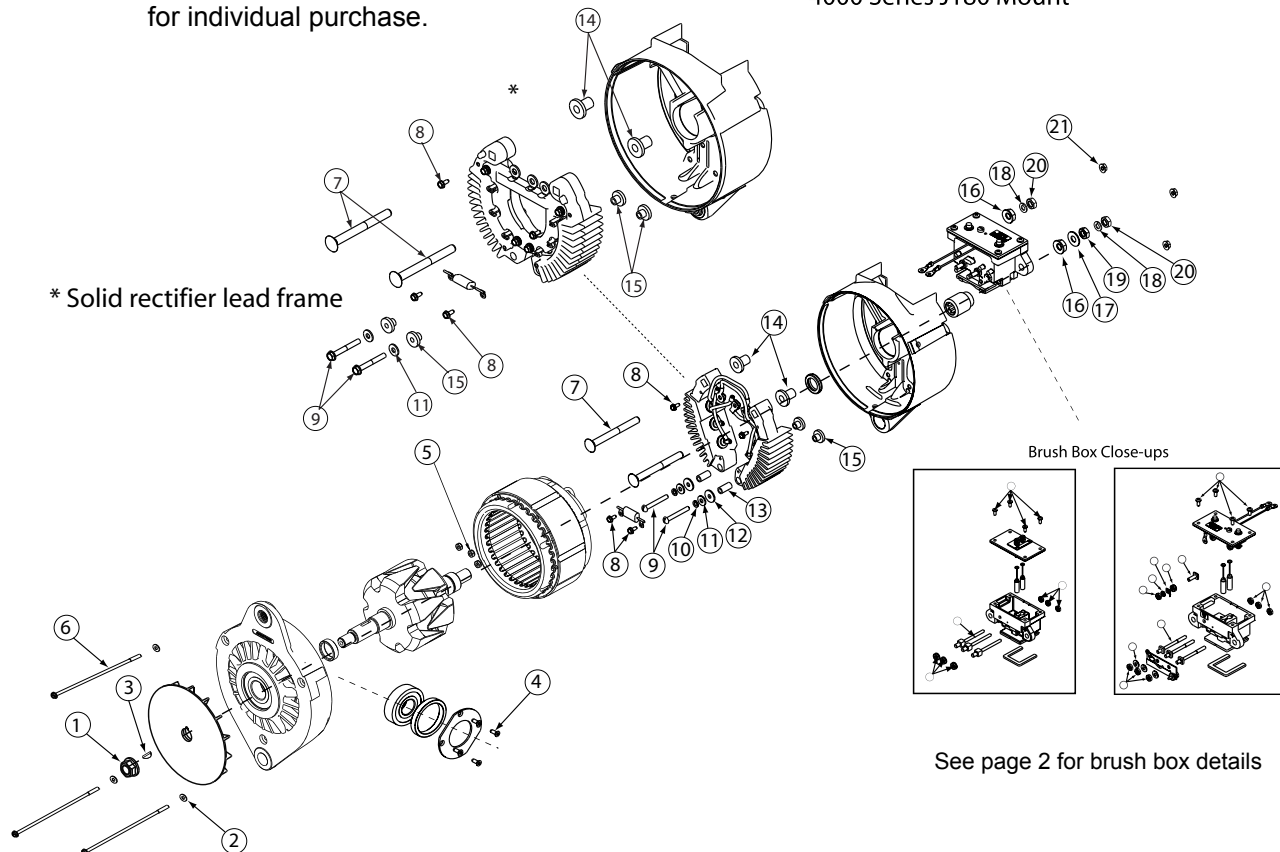
Important: The information contained in this bulletin is intended for use by trained, professional technicians who have the proper tools, equipment, and training to perform the required maintenance described above. This information is NOT intended for 'do-it-yourselfers', and you should not assume that this information applies to your equipment. If you have any questions regarding this information please visit our website at [www.prestolite.com](http://www.prestolite.com), or contact our technical service department at:

Source: Leece-Neville Heavy Duty Systems Division - Arcade, NY USA  
Date: JULY 7, 2017  
Bulletin No: TSB-3012  
Models: 4000 Series 6 Diode Rectifier Alternators  
Subject: Hardware Kit for 4000 6 Diode Series Alternators K2121047675

This series covers 6 diode rectified alternators less than 185 Amps and either remote rectified or remote regulated models not requiring the R031101136S capacitor.

NOTE: All of these components are part of the hardware kit and not available for individual purchase.

4000 Series J180 Mount

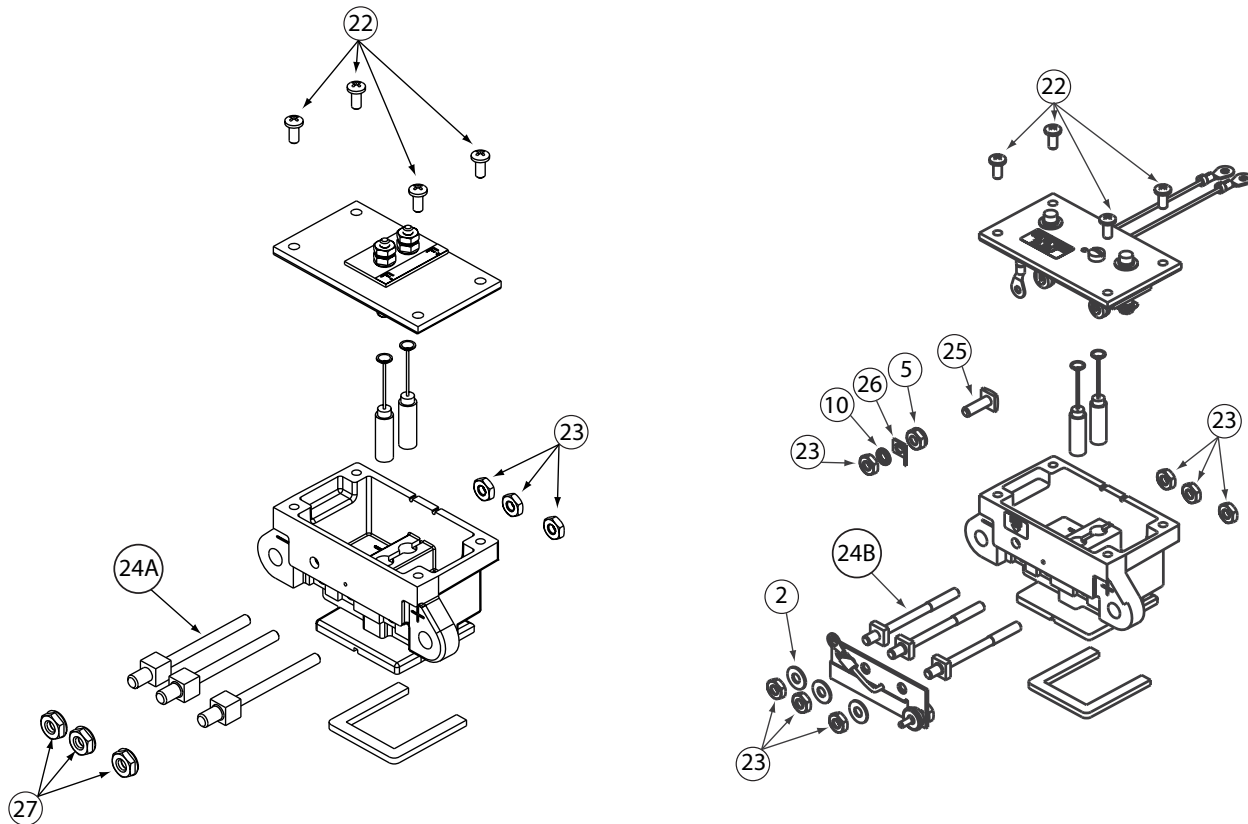


Important: The information contained in this bulletin is intended for use by trained, professional technicians who have the proper tools, equipment, and training to perform the required maintenance described above. This information is NOT intended for 'do-it-yourselfers'; and you should not assume that this information applies to your equipment. If you have any questions regarding this information please visit our website at [www.prestolite.com](http://www.prestolite.com), or contact our technical service department at:



Date: JULY 7, 2017

Bulletin No: TSB-3012



**Important:** The information contained in this bulletin is intended for use by trained, professional technicians who have the proper tools, equipment, and training to perform the required maintenance described above. This information is NOT intended for 'do-it-yourselfers', and you should not assume that this information applies to your equipment. If you have any questions regarding this information please visit our website at [www.prestolite.com](http://www.prestolite.com), or contact our technical service department at:

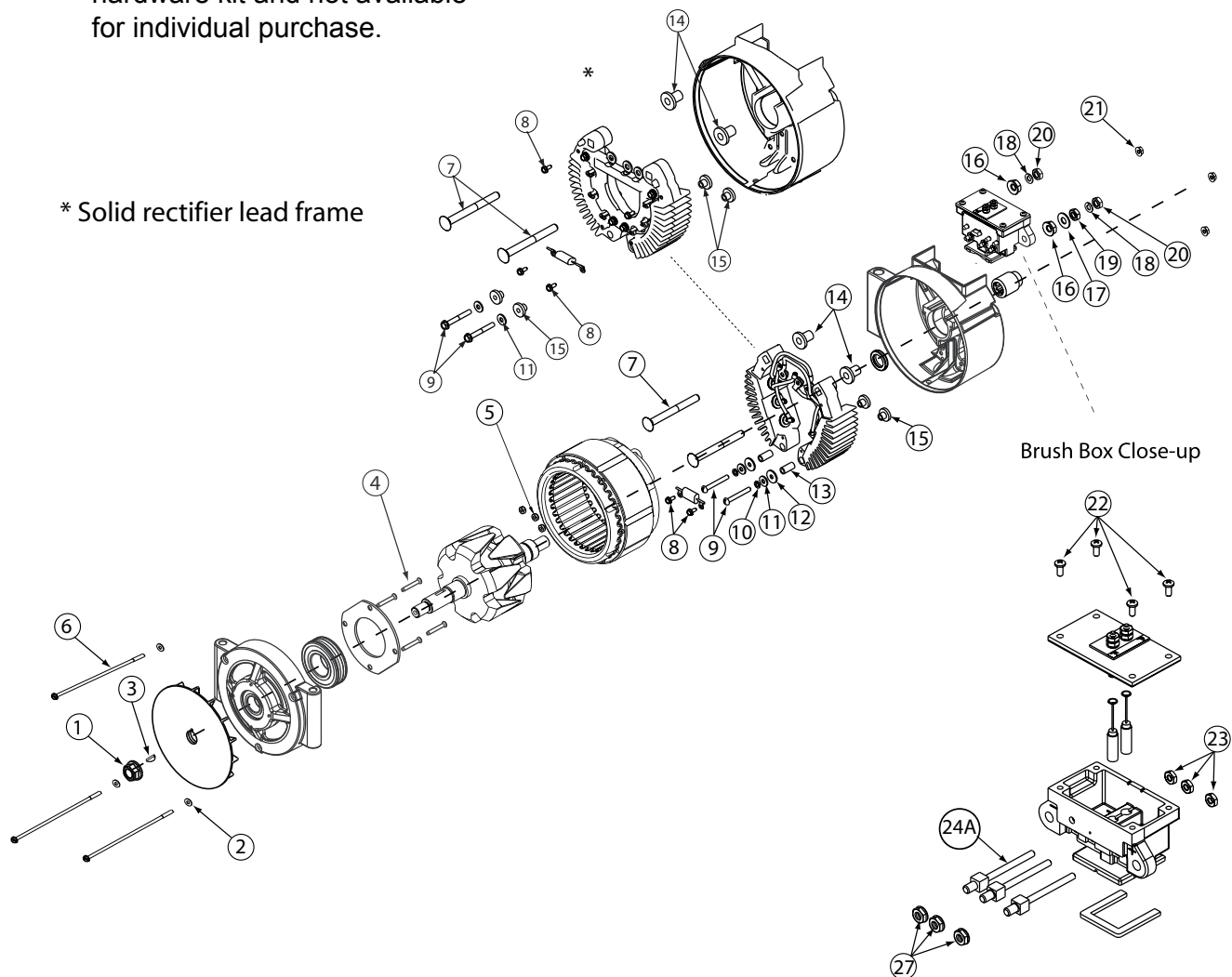


Date: JULY 7, 2017  
Bulletin No: TSB-3012

NOTE: All of these components are part of the hardware kit and not available for individual purchase.

#### 4900 T-Mount

\* Solid rectifier lead frame



Important: The information contained in this bulletin is intended for use by trained, professional technicians who have the proper tools, equipment, and training to perform the required maintenance described above. This information is NOT intended for 'do-it-yourselfers'; and you should not assume that this information applies to your equipment. If you have any questions regarding this information please visit our website at [www.prestolite.com](http://www.prestolite.com), or contact our technical service department at:

Date: January 27, 2008

Bulletin No: TSB-3012

Description	Qty.	Key	Where used
NUT, 5/8-18, LOCK	1	1	Fan Nut
WASHER, FLAT#10	6	2	Thru-Bolt flat washer
KEY, WOODRUFF #8	1	3	Shaft key
SCREW, THREAD FORMING	4	4	Front housing retainer plate holding screw
NUT	4	5	Internal stator nuts to AC-taps
THROUGH BOLT	3	6	Thru-Bolt Hold Alternator Together
THROUGH BOLT	3	6	Thru-Bolt Hold Alternator Together
SCREW TERMINAL 5/16-18 x 3 1/4	2	7	Positive and Negative Output Studs
SCREW, TAP #6-32X11/32	4	8	Hold regulator sense leads and capacitor to rectifier rings
SCREW #10-32 X 1 1/2	2	9	Holds rectifier ring to rear housing
SCREW #10-32 X 1 1/2	2	9	Holds rectifier ring to rear housing
WASHER, LOCK #10	3	10	Lock washer for bolt (Key 9)
WASHER, FLAT #10	2	11	Flat washer for bolt (Key 9)
WASHER INSULATING	2	12	Insulates bolt (Key 9) from rectifier rings
BUSHING, INSULATING	2	13	Insulates bolt (Key 9) from rectifier rings
BUSHING, INSULATING	2	14	Insulates output studs and rectifier rings from rear housing
BUSHING, INSULATING	4	15	Insulates rectifier ring from rear housing
NUT, CON LOCK, 5/16-18	2	16	Holds positive and negative studs into rear housing
WASHER GUARD, 5/16	1	17	Washer used on negative output stud
WASHER, LOCK 5/16	2	18	Lock washer for positive and negative output stud
HEX NUT, 5/16-18 UNC	1	19	Jam nut used on negative output stud
HEX NUT, 5/16-18 UNC	2	20	Nut used to attach customer cables to alternator output studs
NUT, #10-32 FLANGE LOCK	3	21	Thru Bolts nuts
SCREW #8-32 X 3/8	4	22	Regulator attachment screws
HEX NUT, #10-32 UNF	7	23	AC Tap Nuts
STUD TERMINAL	3	24A	AC Studs
STUD TERMINAL	3	24B	AC Studs
SCREW, #10-32 X 5/8, SQ HD	1	25	Ignition stud
TERMINAL, 1/4", 45	1	26	Ignition terminal
NUT, CON LOCK, 1/4-20	3	27	AC nuts

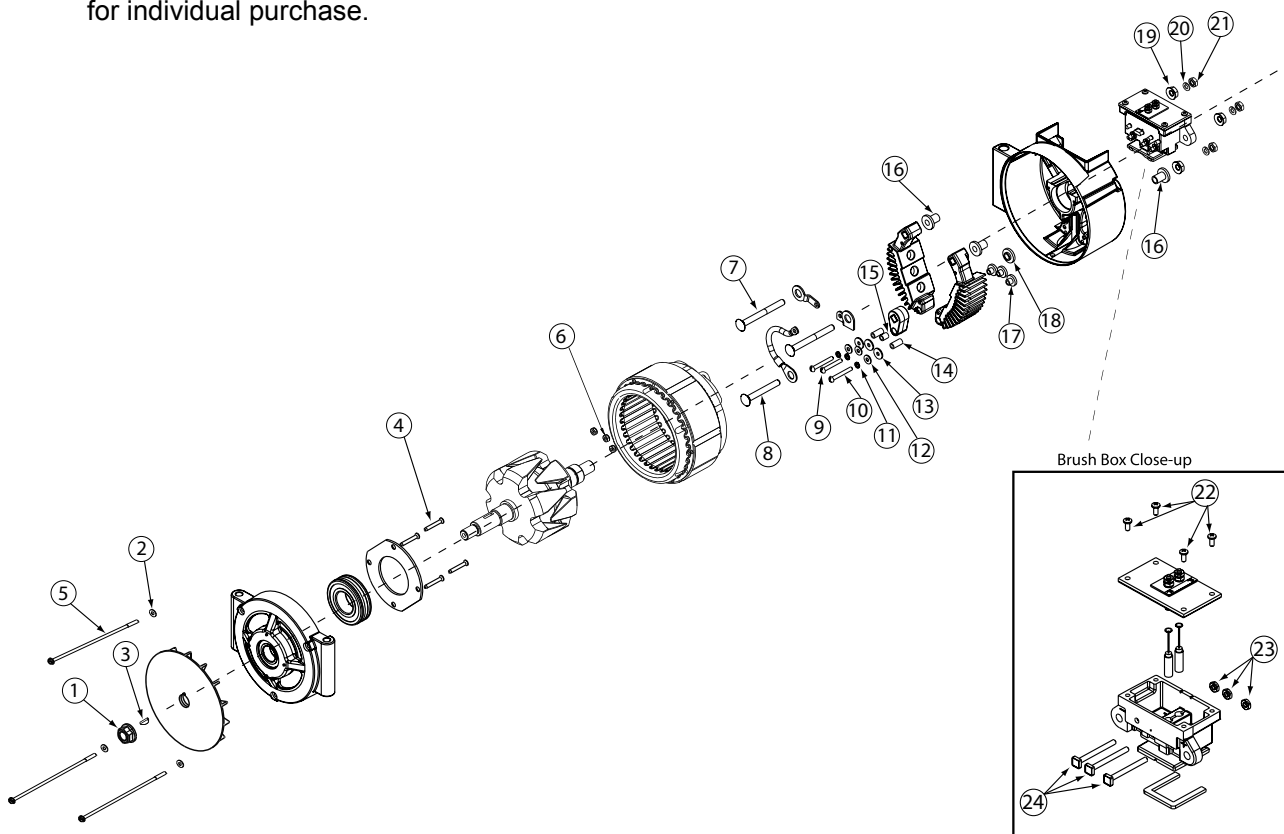
Important: The information contained in this bulletin is intended for use by trained, professional technicians who have the proper tools, equipment, and training to perform the required maintenance described above. This information is NOT intended for 'do-it-yourselfers', and you should not assume that this information applies to your equipment. If you have any questions regarding this information please visit our website at [www.prestolite.com](http://www.prestolite.com), or contact our technical service department at:

Source: Leece-Neville Heavy Duty Systems Division - Arcade, NY USA  
Date: July 7, 2017  
Bulletin No: TSB-3014  
Models: 4000 Series Without Regulators / Rectifiers  
Subject: Hardware Kit for 4000 series T-mount alternators K212104771S for AA series units without regulator.

**K212104771S**

4000 Series AA T-Mount

NOTE: All of these components are part of the hardware kit and not available for individual purchase.



Important: The information contained in this bulletin is intended for use by trained, professional technicians who have the proper tools, equipment, and training to perform the required maintenance described above. This information is NOT intended for 'do-it-yourselfers', and you should not assume that this information applies to your equipment. If you have any questions regarding this information please visit our website at [www.prestolite.com](http://www.prestolite.com), or contact our technical service department at:

Date: July 7, 2017

Bulletin No: TSB-3014

## 4000 Series T-Mount AA series Hardware K212104771S

Description	Qty.	Key	Where used
NUT, 5/8-18, LOCK	1	1	Fan Nut
WASHER, FLAT#10	3	2	Thru-Bolt flat washer
KEY, WOODRUFF #8	1	3	Shaft key
SCREW, THREAD FORMING	4	4	Front housing retainer plate holding screw
THRU.BOLT #10-32	3	5	Thru-Bolts holds Alternator together
NUT	3	6	Hold stator leads brush box
BOLT 5/16 X 3-1/4"	2	7	AC bolt
BOLT 5/16 X 2-1/2"	1	8	AC bolt
SCREW #10 X 1-3/8"	1	9	Attaches AC bolt holder to alternator rear housing.
Screw	2	10	Attaches rectifier heatsink to rear housing.
LOCKWASHER	3	11	Lockwashers for bolts that attach AC bolt holder and rectifier heatsink
WASHER FLT.203-.500-.0	3	12	Flatwashers for bolts that attach AC bolt holder and rectifier heatsink
Washer	3	13	Insulating washer for bolts that attach AC bolt holder and rectifier heatsink
Bushing	2	14	Insulating bushing for bolts that attach rectifier heatsink
BUSHING, INSULATION	1	15	Insulating bushing for bolt that attach AC bolt holder to alternator rear housing
Bushing	3	16	Insulating bushing for AC bolts
Bushing	3	17	Insulates rectifier heatsinks from alternator rear housing
Bushing	1	18	Insulates AC bolt holder from alternator rear housing
NUT, TENZ - 5/16-18	3	19	Secure AC bolts to rear housing
LOCKWASHER	3	20	Lockwasher for customer cables
HEX NUT	3	21	Nut to attach customer cables
SCREW	4	22	Screws that attach remote regulator cover
NUT, STEEL #10-32	3	23	Nuts that hold AC taps in brush box
Stud	3	24	AC bolt

Important: The information contained in this bulletin is intended for use by trained, professional technicians who have the proper tools, equipment, and training to perform the required maintenance described above. This information is NOT intended for 'do-it-yourselfers'; and you should not assume that this information applies to your equipment. If you have any questions regarding this information please visit our website at [www.prestolite.com](http://www.prestolite.com), or contact our technical service department at: